

Trash and Recycling
at

4620 N. PARK

Proper trash disposal and recycling helps all of us at 4620



Bill Metzger, General Manager

We want to encourage all residents of 4620 to reduce the amount of waste they generate, to reuse whenever possible, and to “recycle right” or properly dispose of items which cannot be recycled. This presentation is about how to deal with trash and recycling at 4620. Recycling right reduces the waste of precious resources, lowers our costs, helps keep our community clean and beautiful, and reduces the load on our staff so that they do not have to spend time re-sorting items which have been “recycled wrong.”

– Bill Metzger, General Manager

Please read these guidelines and do not hesitate to reach out to management or to the Technology and Environment Committee if you have any questions.

Trash Disposal and Recycling on Your Floor

If in doubt, do not pollute the recycling stream; just throw it out.



Ordinary household trash: securely bagged, down the chute



Paper: in the tall blue Mixed Paper Recyclables bin (lid has a slit)



Recyclables: loose, in the tall blue Commingled Materials Recyclables bin (solid blue lid)

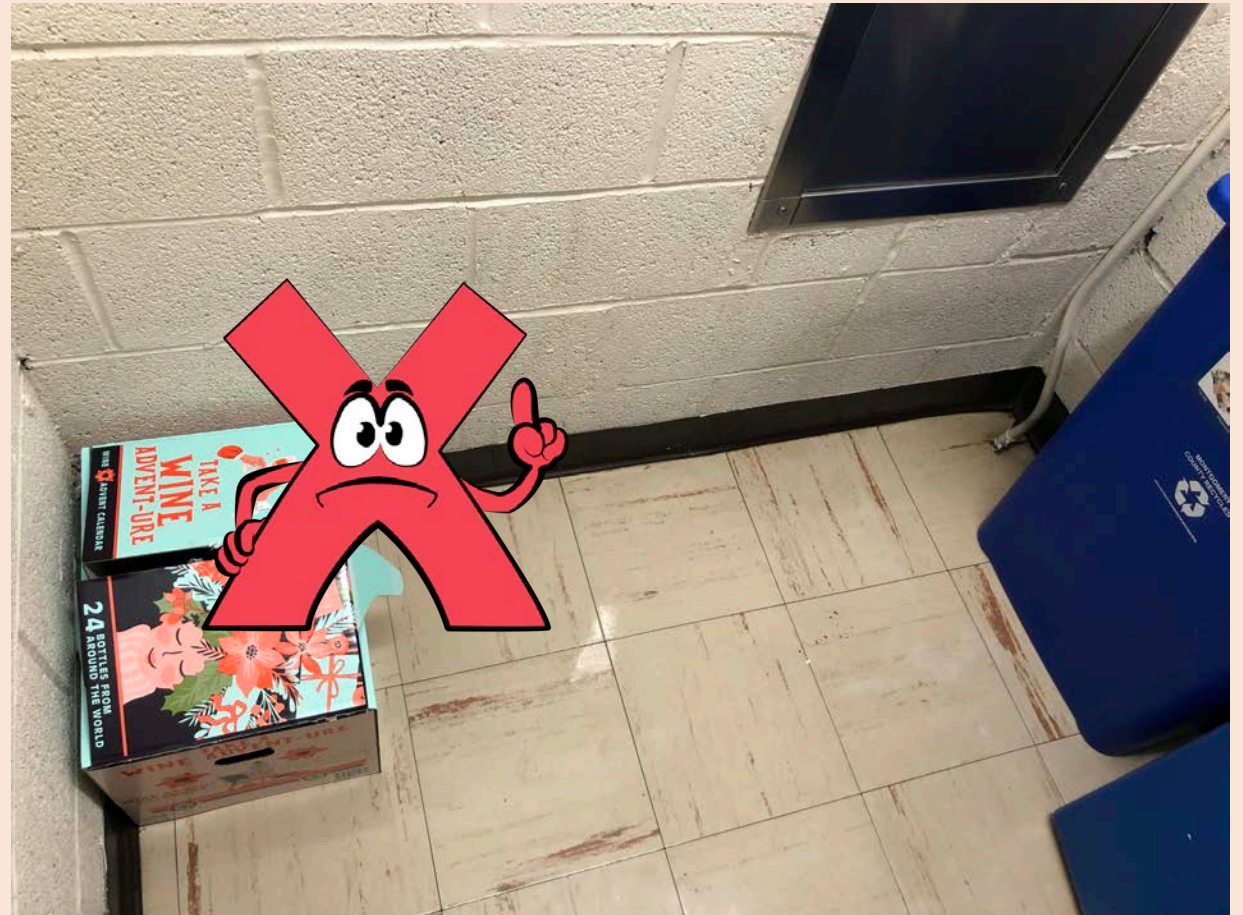
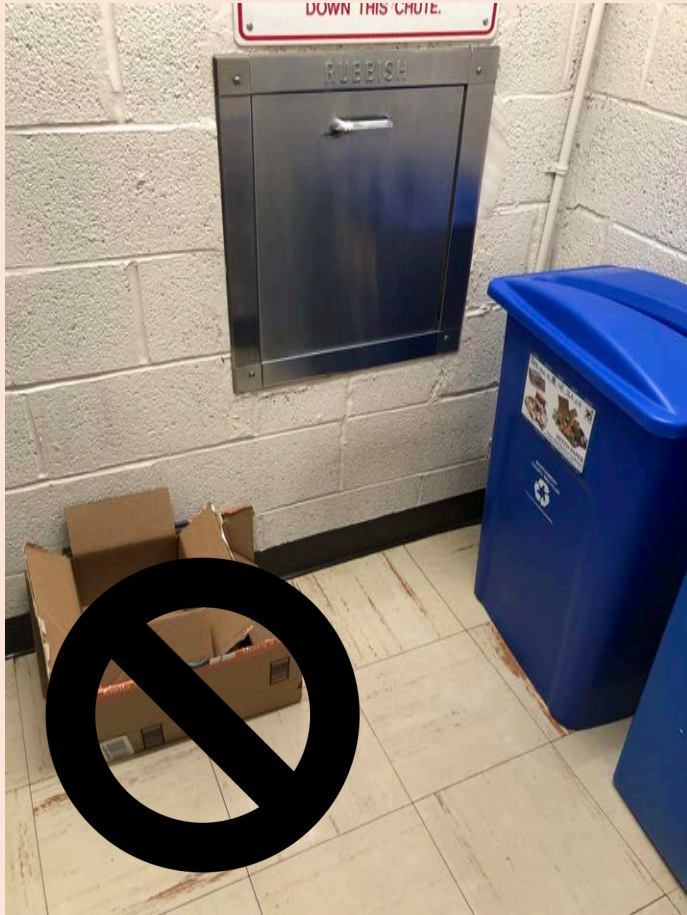
Cardboard and Corrugated Board

Cardboard is a type of heavy paper stock. It's notable for its thick and relatively sturdy consistency, which makes it a favorite for many different types of consumer packaging applications. Examples: cereal, beauty products. It is OK to put in the recycled paper bin in the trash/recycle room.

Corrugated board is a multi-layered material created from three layers of kraft paperboard, an extremely thick type of brown cardboard. The two outer layers are thick pieces called liner boards that form the main body of the box. The middle layer is a thinner, fluted piece of reinforced paper that creates air pockets.

**CORRUGATED BOXES SHOULD BE FLATTENED AND BROUGHT TO THE DUMPSTER ON FLOOR G3,
NOT PUT IN THE TRASH/RECYCLE ROOM OR THE PAPER BIN.**

TRASH ROOM ETIQUETTE

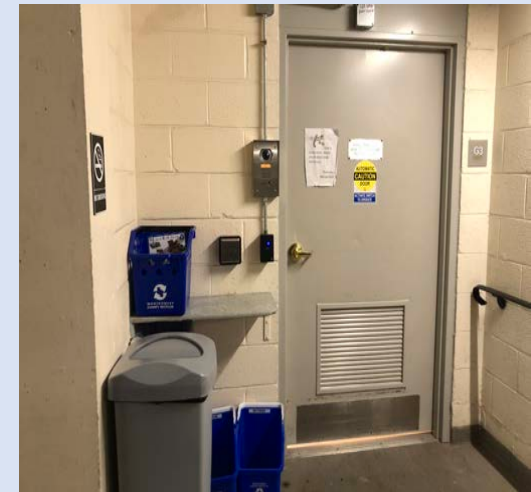
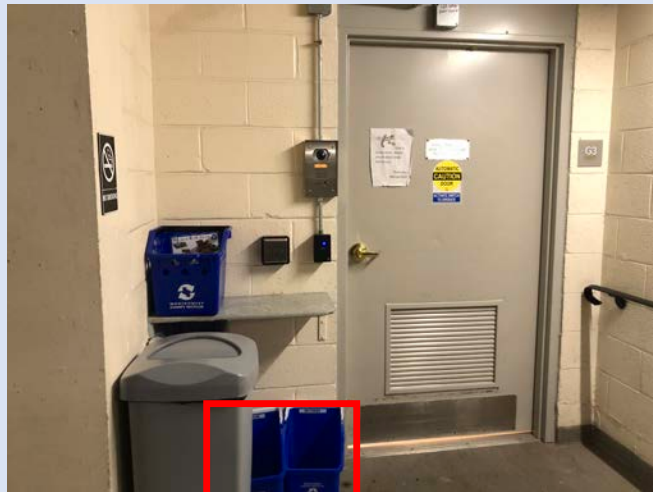


Trash Disposal and Recycling

Floor G3 is the Floor for Disposing of Larger Items, Batteries, or CFLs

- **CFL Bulbs: Blue bin A at entrance to elevators**
- **Batteries: Blue bin B at entrance to elevators**
- **Corrugated or cardboard boxes (flattened) go into dumpster near Parking Space 83**
- **With the exceptions of construction debris and furniture, any other trash that can fit in a 14 gallon bag can be put into the dumpster in center parking aisle (near Parking Space 89) EXCEPT wet paint! Paint can only be thrown away if it is hardened with a hardening agent.**

Disposing of Compact Fluorescent Lamps (CFLs) and Batteries on G3 (they are not recycled; because of toxic materials in them, they are taken to a secure landfill)



Incandescent: regular trash



CFLs



All batteries

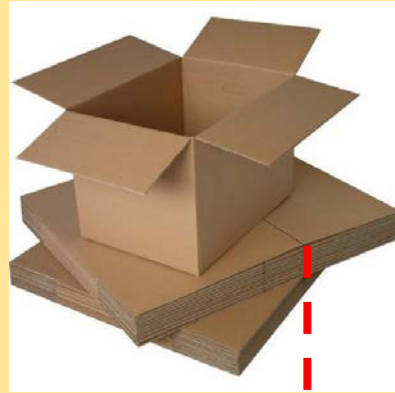


LEDs: regular trash



DUMPSTER ETIQUETTE: Disposing of Big Stuff on Floor G3

Corrugated or cardboard boxes (flattened) go into dumpster at Parking Space 83



Large Trash (too big to fit into chute on your floor but able to fit into a 14 gallon bag) – goes into dumpster in center parking aisle at Parking Space 89



DO NOT PUT THESE IN OR NEXT TO THE DUMPSTER:

- Furniture of any kind
- Filing cabinets
- Shelves
- Appliances
- Electronics (e.g., computers, TVs),
- Construction debris (e.g., tiles, drywall, wood, wet paint, etc). (Paint can only be thrown away if it is hardened with a hardening agent.)

ITEMS THAT CAN BE DONATED

- Donation Day will be organized periodically at 4620. Watch for notices in the weekly News Round Up.
- Information on various charities that accept donations and information on what they take is in BuildingLink under Local Business Vendors.

Thank you for your help in making our job easier.



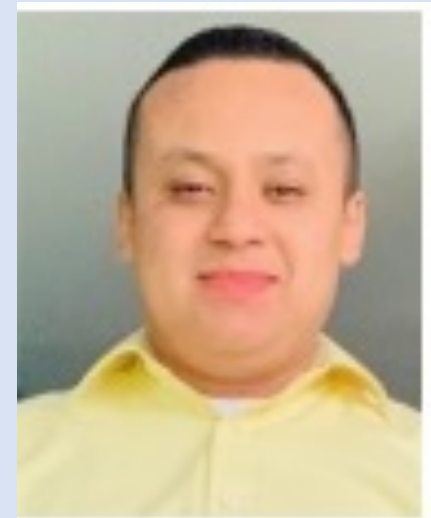
Enrique Moncefu
Porter



Leo Garcia
Porter



Deisy Cedillo
Lobby Porter



Edil Funez
Lobby Porter

The End

Trash and Recycling
at

4620 N. PARK